



# Midwest Prospect's Sioux Falls

## Showcase

## Results

July 12<sup>th</sup>, 2024

*Braden Boyle*

## 60 Yard Dash Times

7.22, 7.19

### IF Velocity

-

### OF Velocity

70-73, 76(T)mph

### 1B - Velocity

-

### C - Velocity

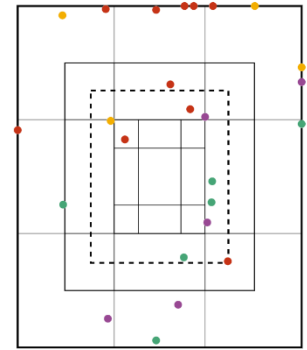
-

### C- Pop Times

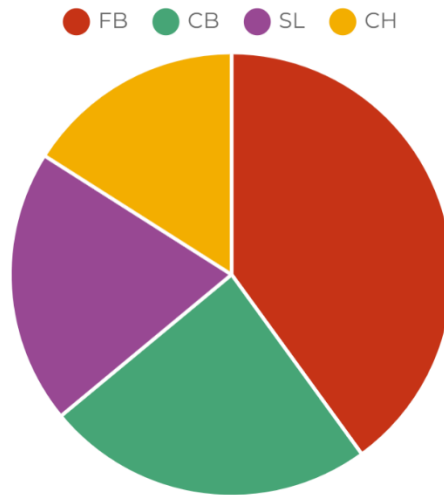
-

### DATA

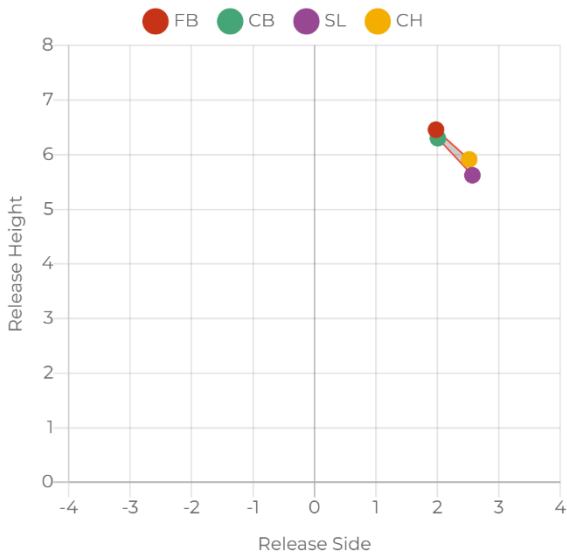
Pitch Type	Velo	Max. Velo	RPM	Max. RPM	V-Break	H-Break	Spin Eff.	Gyro Degree	Spin Dir.	Strike %	R. Angle	H. Angle	R. Height	R. Side
FB	78.1	80.7	2,267	2,319	15.3	17.6	86.4	30	00:55	40.0%	-0.5	-4.1	6.5	2.0
CB	67.8	69.9	2,179	2,252	-3.7	-0.4	32.2	71	07:52	50.0%	0.8	-1.6	6.3	2.0
SL	68.5	69.6	2,221	2,311	0.4	-0.3	31.0	72	09:02	40.0%	2.5	-1.8	5.6	2.6
CH	73.7	75.1	1,530	1,605	8.6	15.7	89.3	26	01:35	25.0%	1.3	-4.4	5.9	2.5



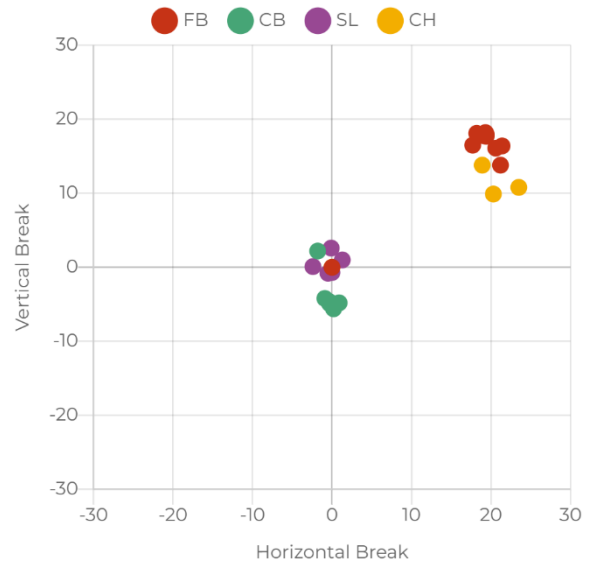
### PITCH TYPE %



### RELEASE AVERAGES



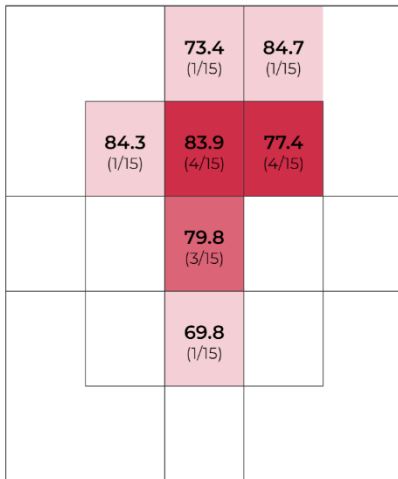
### BREAK PLOT



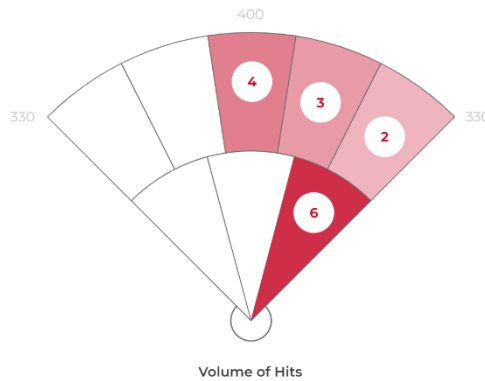
## DATA

	Avg	Max	Hard Hit Avg		
Exit Velocity	79.8	88.9	83.4	Batting Avg.	0.533
Launch Angle	16.7	45.9	12.5	xwOBA	0.584
Direction	21.1°R	36°R	25.9°R	Slugging	0.733
Distance	182	294	168	Hard Hit %	66.7%
Spin Rate	2,063	3,403	2,005	Bombs %	33.3%
				Ropes %	0%

### EXIT VELOCITY BY ZONE



### HIT VOLUME



Zone	Pull	Middle	Oppo
Volume of Hits	0/15	6/15	9/15
Avg. LA	-	32.0	7.0
Avg. EV	-	76.0	82.0
Avg. Spin	-	2,311	1,897
Avg. Distance	-	269	124

Volume of Hits

### HIT CLASSIFICATION

- Dribbler
- Ground Ball
- Low Line Drive
- High Line Drive
- Fly Ball



### HIT OUTCOMES

- Single
- Double
- Field Out

